

G A A S T R A   P R O D U C T   G U I D E

# GA SAILS

THE ART  
TO BE  
AHEAD

10

# CONTENT

• GAASTRA	4
• FEATURES	6
• INT. TEAM	8
• WAVE SAILS	14
• FREESTYLE SAILS	16
• RACE/SLALOM SAILS	18
• FREERIDE SAILS	20
• SAIL RANGE	22
• MANIC HD	26
• MANIC	30
• IQ	34
• PURE	38
• HYBRID	42
• VAPOR	48
• PHANTOM	52
• COSMIC	56
• MATRIX	60
• PILOT	64
• FOXX/ FREETIME	68
• MASTS	72
• EXTENSION	74
• BOOMS	78
• HARNESSES	84
• SPECS	88



THOMAS TRAVERSA



# - GAASTRA SAILS -

2 0 1 9

Decades of innovation, experience and passion for details lead GA Sails to world titles and most importantly satisfied windsurfers all over the world. A team of world-class riders and an experienced and enthusiastic sail designer worked closely together, tested on and off the water and tuned each parameter to proudly introduce the GA Sails 2019 range to you.

Tons of hours of R&D, love for our products and for windsurfing allowed us to increase the level of performance and quality of the 2019 sails and accessories. Our development team lives for the sport and this reflects in their enthusiasm for each sail size, batten and specification, being tuned and perfected in all conditions around the globe. We travel far to make sure our sails work for you, whether you're windsurfing in Chile, the Netherlands or Japan.

GA Sails need to work perfectly for you, no matter where you go out and what your level is. This is reflected in our ambitious goal to create the perfect sail for world title aspirants and beginners, but also everybody in between. The new parallel batten concept, Metallic X-Ply laminates, creating exciting new designs, and many more features have been included in our 2019 sails, leading to a range that performs in a wider range of conditions than ever before.

We maintain Gaastra's tradition of innovative ideas and high quality products and combine it with new concepts and sensational designs to establish a new era of windsurfing sails.

Welcome to the next generation of GA Sails and enjoy the evolution of windsurfing.

THOMAS TRAVERSA





# - SAIL FEATURES -

2 0 1 9

## NEW METALLIC XPLY & 2PLY

*Our brand-new metallic laminates create incredible colors throughout our whole range of sails and noticeably extend their lifespan. These effects are achieved by incorporating metallic flakes into the laminate itself, which creates never seen before visual effects to our windsurfing sails and reflect harmful UV rays. This construction method is applied both in our X-PLY and 2-PLY laminates.*

**VARIO PROTECT**

This little add-on for the top cap on the Vario Tops protects the adjustable webbing from breaking down from wear and tear on rough ground.

**INTEGRATED TENSIONER**

Very light and durable for the perfect trim.

**MAST SLEEVE OPENING**

The GA Silicon patch above the boom cut-out opens the mast pocket just a little, allowing the rider to insert the mast with just one hand, without having to move up the luff.

**OUTHHAUL PULLEY**

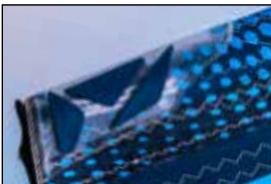
Available on Vapor and Phantom models. An easy, quick system to rig and make adjustments. CLEAN and SIMPLE.

**SPECS PRINT**

Helpful specs of luff and boom lengths as well as recommended mast use to allow you to rig your sails just like the pros do!

**MINI BATTEN**

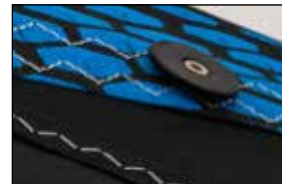
Smaller and lighter for 2019 mini battens help with the stability of the sail without adding unnecessary stiffness or weight to your rig.

**3D HEAD PROTECTION**

Protects the head from getting damaged for a long lasting sail.

**ROLL UP LEASH**

Quick, easy elasticated system that keeps sails rolled up nice and tidy. Perfect for easy de-rigging and premium storage.

**REINFORCEMENT BATTEN POCKET**

Light and durable reinforced area, to help protect against all types of wear and tear!

**PROTECTED HEAD AND CLEW**

We added an X-ply panel at the back of the window and at the clew of the wave sails to improve protection in this area from crushing. For the same reason, the very top panel of the wave sails has an X-ply Panel.





## C-FILM



To get the best possible colour for the longest possible time, we have invested heavily in our film over the past season. The result is outstanding colour that will catch your eye all season long.

## VARIO TOP



The GA Vario top will not slip. Designed for maximum performance the GA vario top is easy to use and strong enough for the PWA. With set and forget system that means you only have to adjust it once.

## DACRON LUFF PANEL



Comes in all Manic, Manic HD, IQ, Pure, Hybrid, Pilot and Matrix designs, allowing a smoother/softer feel that gives the sail life!

## CLEW AREA



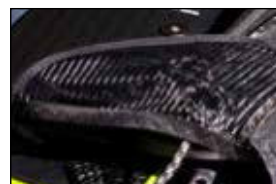
Our refined clew patch provides the ultimate in strength and durability. It also protects the stitching with the new styling features.

## TACK FAIRING



A redesign that makes the fold flow much easier. It is clean and just how it needs to be: Perfection!

## DOWNHAUL STORAGE POCKET



Downhaul storage pocket – Our simple downhaul storage pocket makes rigging faster and easier.

## CONSTANT CURVE LUFF



In 2019 we will continue to develop our masts with Constant Curve bend. This has allowed us to approach development from new angles and push the performance of the sails further each season.

## RADIAL LOAD TAPE



Comes on Manic, Manic HD, IQ and Hybrid. In addition to our radial panel layout, this reinforces the sail along the load lines whilst reducing the stretch of the material, allowing the sail to hold its shape longer when you get hit by stronger winds.

## VARIO POCKET



A simple pocket on the top of the luff sleeve allows you to store away any excess webbing from your Vario Strap. No more flapping Vario Tops in the 2019 GA Sails range.

## DOUBLE SEAM



This heavy duty reinforcement area through the windows on the wave sails gives solid durability at these critical areas.

## POSI-LEECH



Updated for 2019 the Posi-Leech system now has a refined smooth cut-out line to the first batten. Improving sail twist and response in all conditions.

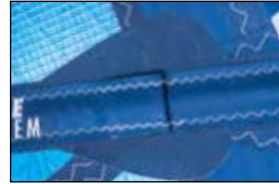
## INTEGRATED BATTEN TECHNOLOGY



To reduce the overall weight of our sails the top batten have been designed using an integrated panel design Rather than add extra weight for the batten pocket the batten pocket is sewn directly into the panel. Improving strength and reducing swing weight. On Manic, Manic HD, IQ, Pure, Phantom, Vapor.

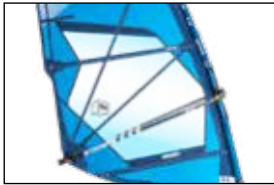


## CONVERTIBLE BATTEN SYSTEM



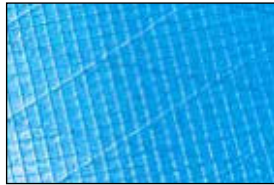
Designed to further increase the range of our wave sails the convertible batten allows you to add depth and power in lighter winds or stability and control when it gets windy.

## RADIAL PANEL LAYOUT



Improved layout for a perfect and locked-in sail shape, providing a smooth profile, twist control and durability. The 3rd generation provides a full Radial Panel Layout from all 3 corners of the sail, the seams are aligned with the forces that originate from the tack, clew and head to avoid deformations of the shape and design of the sail. The new RADIAL LOAD TAPE brings even more heavy duty into the sails.

## 2-PLY



With our brand-new metallic 2-PLY we reached the perfect mix of strength, durability and weight. The laminate materials consist of a much thinner film with metallic flakes in between and support of a double structure of fibers – a balanced scrim of fibers, orientated in the warp that fit within a classic X-PLY angled series of fibers. This complex woven web offers highest durability, saves weight and creates an astonishing look. This laminate is mostly used in the upper sail body to achieve minimal swing weight with still a lot of protection in the critical areas.

- Less weight: use of metallic 2-PLY laminate reduces the weight in the top area of the sail by more than 10%
- Softer handling for better performance and comfort in gusts
- Better strain value for perfect profile and shape in the long term
- Better UV resistance due to a thinner film and especially metallic flakes reflecting UV rays
- Used in crucial sail areas for best response, maneuverability and minimal swing weight

## X-PLY



We have been working closely with Dimension to ensure that we have the toughest sails on the market and the introduction of metallic flakes opened up new possibilities to improve our laminates even more. The best films in the business are refined with metallic flakes in between the laminate, which create a new dimension of durability thanks to the UV ray reflection. Besides the technical benefits, the metallic flakes in the laminate create impressive and unique looks. Our top of the line 4MIL X-PLY is now lighter, stronger and more beautiful than ever before

**G A**  
**S A I L S**

# - INTERNATIONAL TEAM -

2019

The riders from the GA Sails team contribute their own ideas, style and flavor to our sail range. All these different perspectives are bundled in chief sail designer Peter Munzlinger's hands, who creates the sails that allow our riders to be on top of their game and fight for world titles. We are more than happy to supply riders like Thomas Traversa, Matt Pritchard, Ross Williams, Cedric Bordes, Taty Frans, Davy Scheffers and Antony Ruenes with the tools to perform at their best and always be able to rely on their gear. These riders and many more are working closely with our development team, schools and rental stations so that everybody can find their perfect sail in the GA Sails 2019 range.

ROSS WILLIAMS

PETER MUNZLINGER



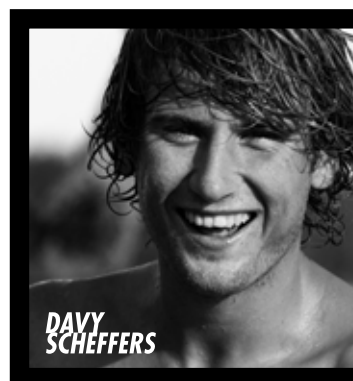


PETER MUNZLINGER

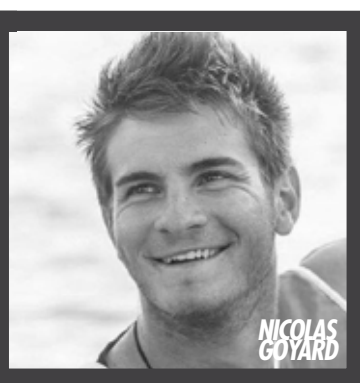
**GA**  
SAILS

# - INTERNATIONAL TEAM -

2019







# WAVE

## - WAVE SAILS -

2 0 1 9

These are the sails, Thomas Traversa charges big waves all over the world with. Our team is fighting for world titles once again this year and we supply them with proper tools to do so. However mainly our wave sails are developed, designed and built for you to make the most out of every day, from epic offshore conditions to choppy waves on onshore days. New features make the IQ the perfect choice for uncompromising performance, while the Manic keeps offering the best all-round wave efficiency in our range.



MANIC HD



MANIC



IQ





ROSS WILLIAMS

# - FREESTYLE SAILS -

2 0 1 9

This is the discipline exciting the crowds and that is exactly what you will be doing with our brand-new 2019 Pure. Our development team around some of the best freestyle windsurfers in the world came up with a fast and agile package, ready to be thrown into everything imaginable, whether it is a Spock, Air Kabikuchi or any move that is still to come.



PURE



ANTONY RUENES



STYLE



# RACE

## - RACE/SLALOM SAILS -

2019

No more than split seconds can make the difference between winning a world title and losing your spot in the final. However, slalom sailing is about more than the World Tour, it's about overtaking your friends at the local lake and being the fastest at national racing events. With the 2019 Vapor you can be the one on the top of the podium and breaking speed records. The Phantom on the other side doesn't cut back on performance and speed, offering easier handling and manoeuvrability to speed up your ride.

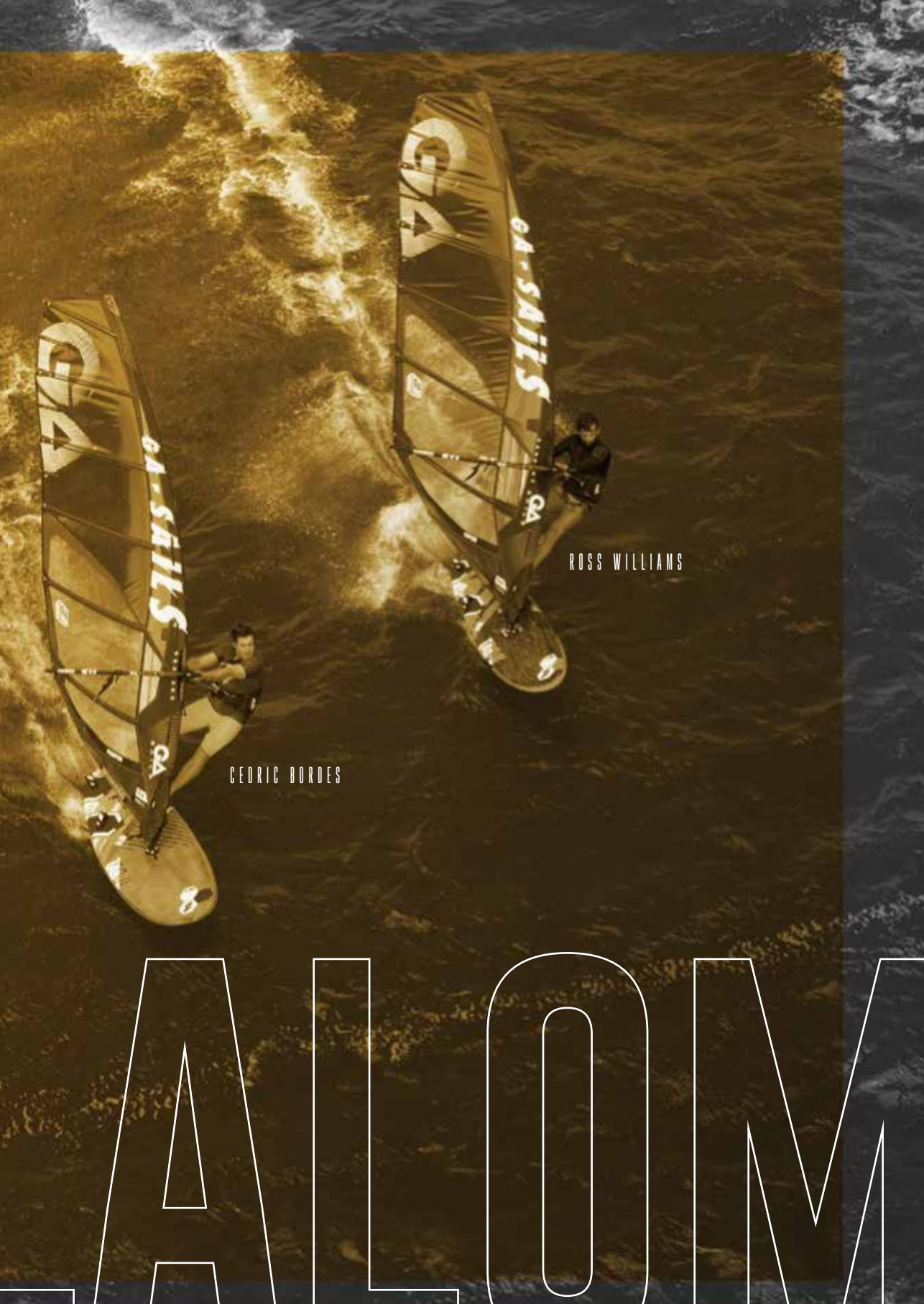


PHANTOM



VAPOR





ROSS WILLIAMS

CEDRIC BORDES

# ALOM



# FREERIDE SAILS

2019

Freeriding is the core of windsurfing and therefore we work hard every year to make our freeride range the most recognized on the market. Putting in all this effort, we came up with a range of easier, but still faster and more versatile sails for 2019. Make use of the unlimited possibilities of the Hybrid, enjoy an easy ride with the Pilot, be impressed by the manoeuvrability of the Matrix and make slalom sailors tremble with the Cosmic in your hands.



COSMIC



MATRIX

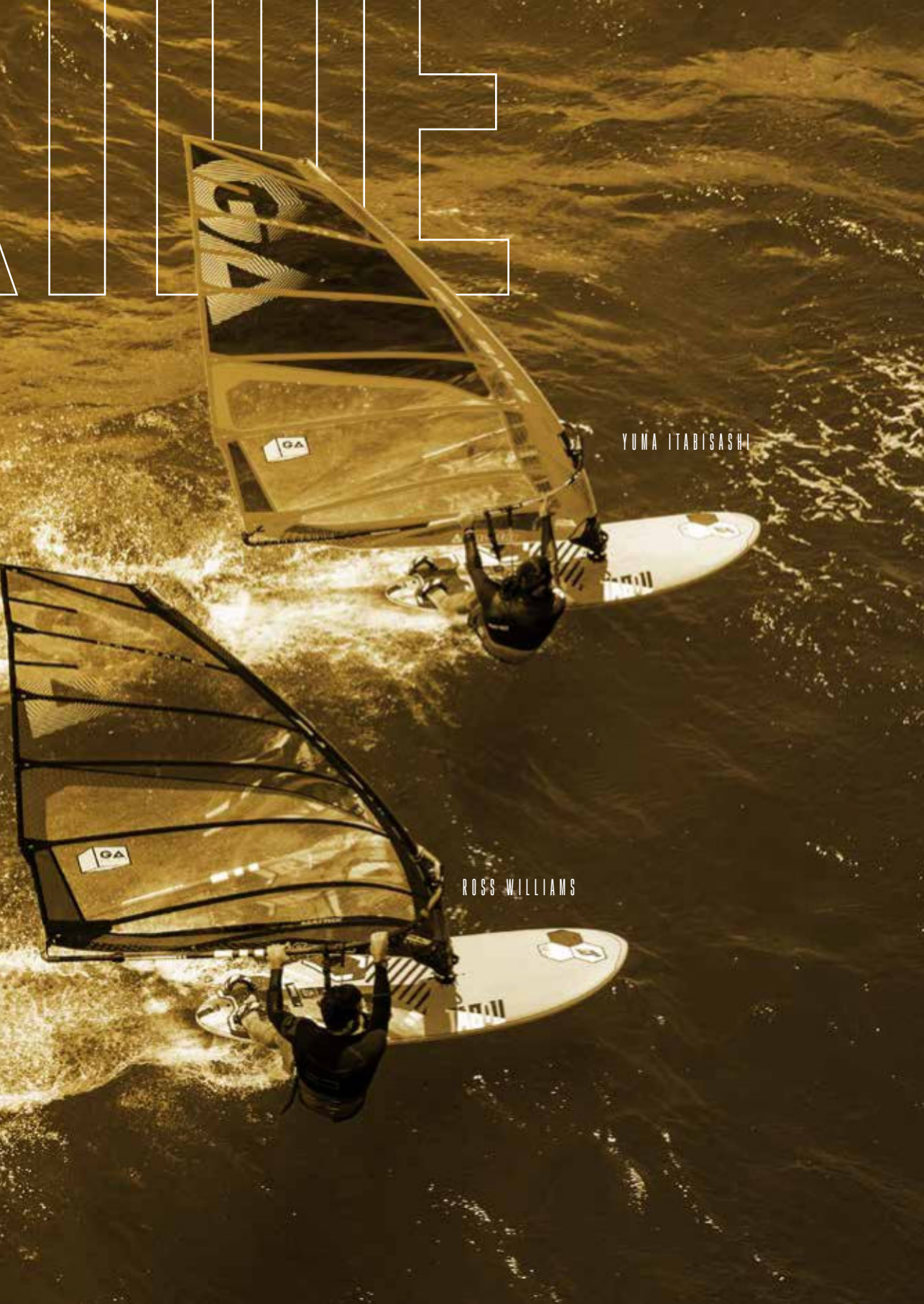


HYBRID



PILOT





YUMA ITABASHI

ROSS WILLIAMS

# - SAIL RANGE OVERVIEW -

2 0 1 9

RADICAL WAVE

ALL WAVE

EURO WAVE/  
POWER WAVE

FREESTYLE

BUMP AND JUMP

IQ



MANIC



PURE



HYBRID

MATRIX

COSMIC

PHANTOM

VAPOR

PILOT



FREERIDE

PERFORMANCE  
FREERIDE

FREERACE

RACE

ENTRY / PROGRESSION





GA  
SAILS







**THE ART  
TO BE  
AHEAD**

# - MANIC HD -

H A R D C O R E W A V E

---

The dual concept of our Manic HD range combines power and light feeling at its best, creating one of the most radical wave sails on the market with more power than ever before!

## For Whom:

With the Manic HD any conditions will be tamed with ease by wave sailors, storm chasers and bump & jump enthusiasts anywhere, anytime!

The combination of a 5-batten design of the Manic HD 5.0 and bigger and a more radical 4-batten design of the smaller sizes guarantees to get the most out of each sail size, you choose for your personal quiver. With a more powerful profile, the bigger Manic HD sails create speed quickly to be able to catch waves in gusty, light winds and be able to perform big jumps even on the lightest days. The 4 battens of the Manic HD 4.7 and smaller create a radical feeling and allow immediate response in tight turns and explosive cutbacks.

All sails have been equipped with a new panel layout with a smaller window and the fresh parallel batten concept, creating a more compact outline and a lighter, smoother and more equilibrated feeling. The brand-new metallic 4 mil X-Ply and 1.75 mil 2-ply add higher UV resistance and a shining look to the range. Our Convertible Batten System allows you to use the Manic HD with a short batten above the boom, depending on your individual preference.

These features provide you with the most versatile Manic HD range, we ever developed, getting you in the water first and out of the water last!





C.3

3.3 | 3.7 | 4.0 | 4.2 | 4.5 | 4.7 | 5.0 | 5.4 | 5.8 | 6.2

GA  
SAILS

ROSS WILLIAMS





# THE MANIC HD

- | CONSTANT CURVE MAST BEND
- | PARALLEL BATTEN CONCEPT
- | INTEGRATED BATTEN TECHNOLOGY
- | RADIAL LOAD TAPE
- | POSI LEECH
- | CONVERTIBLE BATTEN SYSTEM
- | DOUBLE CLEW EYELETS
- | SMALLER X-PLY WINDOW
- | DACRON LUFF PANEL
- | 4 MIL METALLIC X-PLY
- | 1.75 MIL METALLIC 2-PLY



# - MANIC -

H A R D C O R E W A V E

The dual concept of our Manic range combines power and light feeling at its best, creating one of the most radical wave sails on the market with more power than ever before!

## For Whom:

With the Manic any conditions will be tamed with ease by wave sailors, storm chasers and bump & jump enthusiasts anywhere, anytime!

The combination of a 5-batten design of the Manic 5.0 and bigger and a more radical 4-batten design of the smaller sizes guarantees to get the most out of each sail size, you choose for your personal quiver. With a more powerful profile, the bigger Manic sails create speed quickly to be able to catch waves in gusty, light winds and be able to perform big jumps even on the lightest days. The 4 battens of the Manic 4.7 and smaller create a radical feeling and allow immediate response in tight turns and explosive cutbacks.

All sails have been equipped with a new panel layout with a smaller window and the fresh parallel batten concept, creating a more compact outline and a lighter, smoother and more equilibrated feeling. The brand-new metallic 4 mil X-Ply and 1.75 mil 2-ply add higher UV resistance and a shining look to the range. Our Convertible Batten System allows you to use the Manic with a short batten above the boom, depending on your individual preference.

These features provide you with the most versatile Manic range, we ever developed, getting you in the water first and out of the water last!





C.1



C.2

3.3 | 3.7 | 4.0 | 4.2 | 4.5 | 4.7 | 5.0 | 5.4 | 5.8 | 6.2

ROSS WILLIAMS

GA  
SAILS



# THE MANIC

- | CONSTANT CURVE MAST BEND
- | PARALLEL BATTEN CONCEPT
- | INTEGRATED BATTEN TECHNOLOGY
- | RADIAL LOAD TAPE
- | POSI LEECH
- | CONVERTIBLE BATTEN SYSTEM
- | DOUBLE CLEW EYELETS
- | SMALLER MONOFILM WINDOW
- | DACRON LUFF PANEL
- | 4 MIL METALLIC X-PLY
- | 1.75 MIL METALLIC 2-PLY



# - IQ -

## NEW SCHOOL WAVE

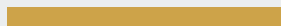
**Don't let your sail limit your radicality! The IQ will make your wave moves look easier and more powerful, always in full control of your gear!**

### **For Whom:**

**The IQ is designed for those, who want to break the rules and go for bigger aerals, more powerful cutbacks and higher 360s than anybody else at any spot in the world does.**

**Specifically designed to fit many of our top wave riders requests, including former world champion Thomas Traversa, the IQ must shine in all conditions, you might face. Past year's very successful design was updated with the brand-new parallel batten concept and new shaping numbers in the foot batten. We achieved great results, increasing the softness in the sail and its top-end, without losing any bit of speed and agility. Today, with the IQ 2019 in your hands, it is more comfortable to make turns and do moves, so you can immediately focus on your next maneuver.**

**Also the panel layout was updated by our development team, designing a smaller monofilm window to increase the IQ's durability. The new 4 mil Metallic X-Ply and 1.75 mil Metallic 2-Ply make the full 4 batten wave sail shine in brand-new exciting colors. Constructed with 4 battens in all sizes, the IQ is also equipped with our Convertible Batten System, allowing you to use the sail with a short batten above the boom. Be everywhere on the wave, you want to be and throw down impressive moves with the IQ 2019!**







3.3 | 3.6 | 4.0 | 4.2 | 4.5 | 4.7 | 5.0 | 5.4 | 5.9

GA  
SAILS



ALEX SANLEHY





# THE IQ

- | CONSTANT CURVE MAST BEND
- | PARALLEL BATTEN CONCEPT
- | INTEGRATED BATTEN TECHNOLOGY
- | RADIAL LOAD TAPE
- | POSI LEECH
- | CONVERTIBLE BATTEN SYSTEM
- | DOUBLE CLEW EYELETS
- | SMALLER MONOFILM WINDOW
- | DACRON LUFF PANEL
- | 4 MIL METALLIC X-PLY
- | 1.75 MIL METALLIC 2-PLY



# - PURE -

PRO FREESTYLE

Pure perfection will lift your skills in freestyle windsurfing to another level!

## For Whom:

Not just those, who fight for the PWA world title, but also young guns, looking to impress the old guys at the lake, are able to land the most radical moves with the Pure 2019.

Freestyle windsurfing never stops evolving and with the injection of acceleration and top speed to last year's Pure, we focused on adding a more direct feeling, faster reaction in double rotation moves and high-wind stability to the 2019 version. We achieved that by updating the Pure with the new parallel batten system, new shape numbers in the foot batten, stiffer battens throughout the whole sail and a slight reduction in the front shape.

The Pure arises from the minds of some of the world's best freestylers and is made for those, who want to have a sail that fully supports their love to freestyling. The uncompromising design delivers maximum pop and neutrality for the most radical moves in your and our PWA champions' quiver.





C.2

4.0 | 4.4 | 4.8 | 5.2

ANTONY RUENES





# THE PURE

- | CONSTANT CURVE MAST BEND
- | PARALLEL BATTEN CONCEPT
- | INTEGRATED BATTEN TECHNOLOGY
- | POSI LEECH
- | DACRON LUFF PANEL
- | 4 MIL METALLIC X-PLY
- | 5 MIL MONOFILM
- | 5 MIL COLOR FILM

GA  
SAILS



# - HYBRID -

## ULTIMATE ALLROUNDER

One sail can get you out on the water at all spots! The Hybrid guarantees performance and fun no matter what the conditions are.

### For Whom:

Everybody looking for sails from one matching range for all conditions will admire the Hybrid. Whether its high wind and waves or light wind freeriding, the Hybrid guarantees great fun with a huge wind range.

The Hybrid was introduced with a bang last year! Three sail lines within one range made it the most complete range on the market. Every size is specifically developed for the respective purpose of use with each size changing in design for the appropriate wind and sea conditions.

No matter where you want to take it, the Hybrid will definitely feel at home!

The smaller sized Hybrids from 3.7 to 4.7 act as power wave sails with great control, early planing and maneuverability for windy days with rolling waves. A four batten design with a full X-Ply window and fiberglass battens provide impressive performance and durability.

From 5.2 to 6.4 the Hybrid progresses into a classic 5-batten bump & jump profile, offering great speed, stability and power. These mid-range sizes are the perfect choice for when conditions start to become a little less consistent. Glass and tube battens in the sail center produce a perfect profile for stability and performance, when conditions start getting a little bit tougher with the X-Ply window protecting the Hybrid from damages and making it extremely durable.

In the largest sizes from 6.7 to 8.2, the full 6-batten freeride profile provides speed and performance to be the fastest out there. A combination of tube, battens and the full profile maximize freeride power for early and fast planing, even on the lighter days.

The Hybrid 2019 was updated with the brand-new parallel batten concept and changed shape parameters in the seams, giving more smoothness and top-end to this powerful sail range. New batten specs in the bigger sizes lower the backhand pressure in overpowered conditions.

With the Hybrid 2019 you can invest in a minimum number of sails, but still maximize your time and performance on the water. A complete line from 3.7 to 8.2 makes it perfectly suited for any kind of conditions.

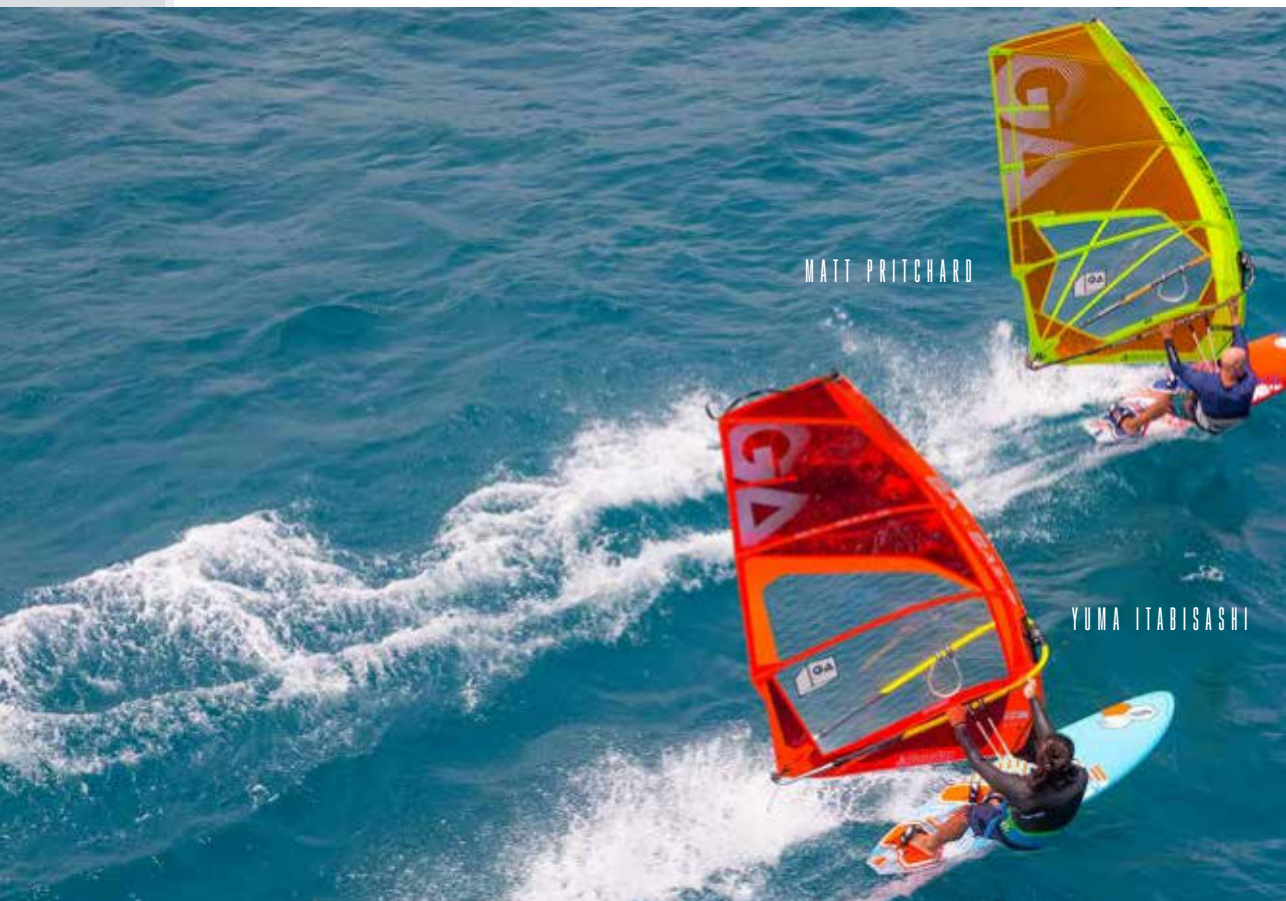


3.7 | 4.2 | 4.7 | 5.2 | 5.6 | 6.0 | 6.4 | 6.7 | 7.2 | 7.7 | 8.2

GA  
SAILS



YUMA ITABISASHI



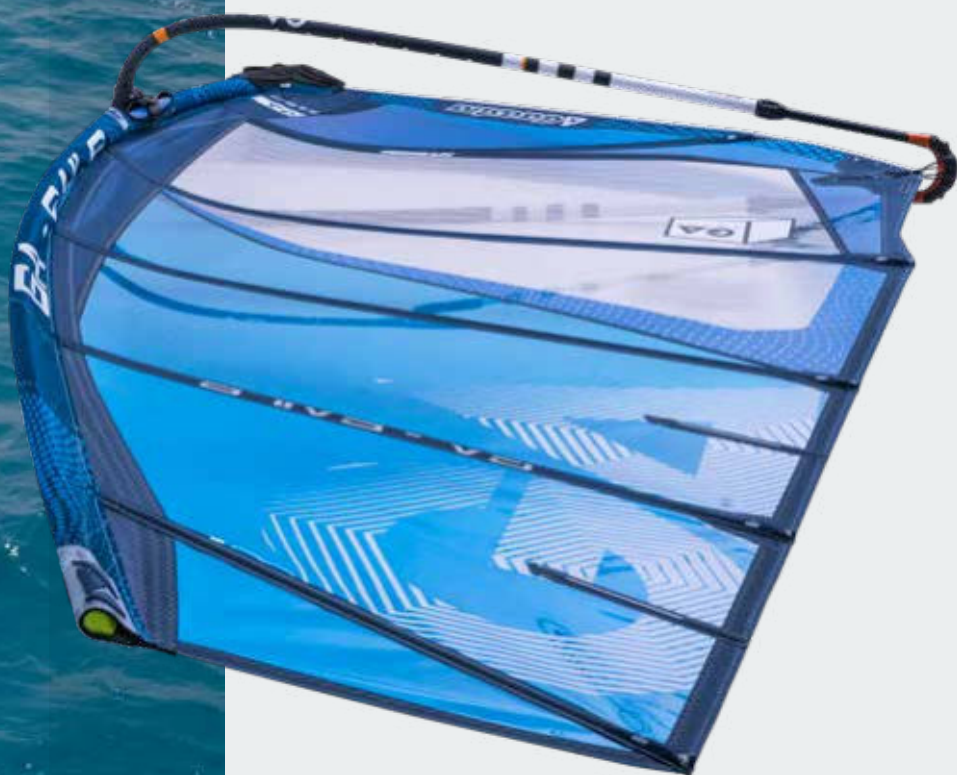
MATT PRITCHARD

YUMA ITABISASHI



# THE HYBRID

- | CONSTANT CURVE MAST BEND
- | PARALLEL BATTEN CONCEPT
- | NEW BATTEN SPECS
- | POSI LEECH
- | DACRON LUFF PANEL
- | 4 MIL METALLIC X-PLY
- | 5 MIL CLEAR MONOFILM ON 6.7 AND BIGGER
- | 5 MIL COLOR MONOFILM
- | 4 MIL CLEAR X-PLY WINDOW ON 6.4 AND SMALLER





GA  
SAILS







THE ART  
TO BE  
AHEAD



# – VAPOR –

PODIUM PERFORMER

**Make sure, your sail won't hinder you from being on the podium! The Vapor is designed for one purpose only and that is winning races and getting you around the course quicker than the others.**

## **For Whom:**

**This racing machine, built without any compromises, will make passionate racers and speed enthusiasts get to top speed and win races with the best equipment on the market.**

**We're constantly working on our racing engine, because our team riders, being some of the best in the world, deserve to have the best sail available in their hands. With the Vapor 2019 we achieved a new level of speed and racing performance.**

**Internal reinforcements make great weight savings possible and purpose built shaping enhancements deliver the snappy response and quicker acceleration of the starting line and out of the corners, our team needs, to get top rankings on the world tour.**

**With tons of races in changing winds during a PWA World Tour event, our pro riders need a light feeling in their hands, maximum power down the straights and insane handling in the turns to be able to finish first. They won't accept anything else and this is why they get the Vapor 2019!**



C.1

GA  
SAILS



ETHAN WESTERA



ROSS WILLIAMS



# THE VAPOR

- | CONSTANT CURVE MAST BEND
- | PARALLEL BATTEN CONCEPT
- | HIGHER ANGLE BATTENS
- | NEW CROSS BATTEN CONCEPT
- | 2 RACE CAMS + 2 SMALL CAMS ON BIG SIZES
- | 4 SMALL CAMS ON SMALL SIZES
- | MULTI-MATERIAL MAST SLEEVE
- | 4 MIL METALLIC X-PLY
- | 4+5 MIL CLEAR MONOFILM
- | 4 MIL COLOR FILM



# - PHANTOM -

R A C I N G P E R F O R M A N C E

**Easy racing performance will make pro slalom sailors shiver and fear the Phantom!**

## **For Whom:**

**In case you want to chase the professional slalom sailors at your home spot and don't want to commit to a full-on racing engine, the Phantom is the sail of choice for you.**

**The Phantom 2019 offers performance in its purest form, being placed a little closer to the concept of the Vapor, our PWA slalom sail. Its sizes match those of the Vapor and the mast sleeve's width and the outline are well more similar. Updating the luff curve numbers allowed us to further increase the performance, maintaining the well-requested accessibility, you expect from our Phantom.**

**It features the brand-new angled parallel batten concept and the New Cross Batten, which allowed us to maintain the power generating volume under the boom, while the profile is pushed down lower into the sail foot for a lower center of gravity. The slightly reduced Posi Leech will get you more top-end control than ever before. No matter, if you want to cruise around the lake with top speed or take part in amateur competitions, the Phantom's performance will immediately win your heart, just like it did with some of our top PWA riders.**



C.1

5.6 | 6.4 | 7.1 | 7.9 | 8.6 | 9.4



GEDRIC BORDES

GA  
SAILS

# THE PHANTOM

- | CONSTANT CURVE MAST BEND
- | PARALLEL BATTEN CONCEPT
- | HIGHER ANGLE BATTENS
- | POSI LEECH
- | NEW CROSS BATTEN CONCEPT
- | NO CAM FOOT BATTEN
- | 2 RACE CAMS + 1 SMALL CAM
- | MULTI-MATERIAL MAST SLEEVE
- | 4 MIL METALLIC X-PLY
- | 5 MIL CLEAR MONOFILM
- | 5 MIL COLOR FILM



# - COSMIC -

## F R E E R A C E

The easiest high-performance camber sail on the market will surprise you with pure power, speed and fun!

### For Whom:

Freeride sailors and free racers looking for speed and power that's easy to handle and control.

Unleashing the Cosmic's performance has never been so easy, as with the 2019 collection. Designed to enable freeriders the inimitable feeling of high top speeds and lay-down jibes, the Cosmic is the perfect combination of power and handling. It feels incredibly light in your hands and will motivate you to go faster than ever.

This year's Cosmic features a wider mast sleeve, a higher aspect ratio in the bigger sizes and, just like the Matrix, the new angled parallel batten concept and the New Cross Batten, which, combined with a slightly reduced Posi Leech, helped us to increase the top-end performance. With the New Cross Batten geometry, we've been able to maintain the power generating volume under the boom, while the angled battens push the profile lower down in the sail foot to achieve a lower center of gravity. For 2019 we added one batten to the 6.7 and 6.2 to increase its stability.

Experience how easy speed and performance can be with the Cosmic 2019 and enjoy its effortless rigging and handling.





6.2 | 6.7 | 7.2 | 7.7 | 8.3 | 9.0

GA  
SAILS

ROSS WILLIAMS





# THE COSMIC

- | CONSTANT CURVE MAST BEND
- | PARALLEL BATTEN CONCEPT
- | HIGHER ANGLE BATTENS
- | POSI LEECH
- | NEW CROSS BATTEN CONCEPT
- | 2 X EASY ROTATION SMALL CAMS
- | X-PLY LUFF PANEL
- | 4 MIL METALLIC X-PLY
- | 5 MIL CLEAR MONOFILM
- | 5 MIL COLOR FILM





# - MATRIX -

## F R E E R I D E

High performance freeride with maximum ease of use will make you the fastest one at the local spot! Everyone can chase his top speed with this test-winning freeride machine.

### For Whom:

The Matrix will not just get experienced freeride windsurfers into lay-down jibes, but also allows those to enjoy this sport, who are just getting into planing.

With several new features this year's Matrix is more than ever the perfect choice for freeride sailors, who need maximum performance without having to miss ease of use and a light feeling in their hands.

The introduction of the new angled parallel batten concept and the New Cross Batten, combined with a slightly reduced Posi Leech, helped us to increase the top-end performance without losing any bit of handling in all conditions. The New Cross Batten geometry maintains the power generating volume under the boom and the angled battens push the profile lower down into the sail foot to achieve a lower center of gravity.  
The Matrix 6.7 is now featured with 7 battens for better stability.

This freeride sail with racing pedigree offers powerful and high performance, while always being simple to use and jibe. Freeride sailors around the globe love and will always love the Matrix.





ALEX SANTELY





# THE MATRIX

- | CONSTANT CURVE MAST BEND
- | PARALLEL BATTEN CONCEPT
- | HIGHER ANGLE BATTENS
- | POSI LEECH
- | NEW CROSS BATTEN CONCEPT
- | DACRON LUFF PANEL
- | 4 MIL METALLIC X-PLY
- | 5 MIL CLEAR MONOFILM
- | 5 MIL COLOR FILM

# - PILOT -

F R E E M O V E

**Making windsurfing easy and accessible to everybody, not sacrificing power and quality!**

## **For Whom:**

**The Pilot is designed for sailors, who look for top performance and high quality at a maximum value.**

**Everybody, who enjoys a smooth freeride session and is making his first steps into the foot straps will love the Pilot. The relaxed luff curve improves compatibility with nearly any mast brand, making the Pilot an economical sail for families. The backhanded profile offers enough power to move even heavier older boards, offering an affordable option to make your first steps in windsurfing. Super smooth batten rotation and progressive pull make the sail very easy to handle and a breeze to learn on. More advanced riders will appreciate the progressive profile and compact outline, providing superb maneuverability and planing power to make sure, you get the most out of every session.**



C.3



C.4

4.5 | 5.0 | 5.6 | 6.2 | 6.8

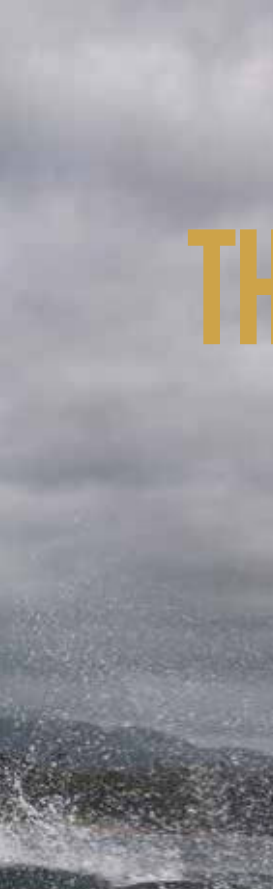


GA  
SAILS

ETHAN WESTERA



# THE PILOT



# - FOXX & FREETIME -

## SCHOOL AND KIDS

### FOXX

Young Guns will now be able to progress faster than ever and enjoy each session with the Foxx!

#### For Whom:

Kids looking for performance and maximum fun out there, will admire the Foxx.

This no-cam youth performance sail, designed around our Foxx masts, makes the young ripper feel like a pro. Many of the specifications, currently featured in our Pilot and Matrix range have been adopted to get the best performance for the upcoming generation. Your kids deserve the correct tools to enjoy their passion and the Foxx definitely belongs in their quiver.

### FREETIME

Making the learning process in windsurfing fun, the Freetime is the perfect choice for schools and families.

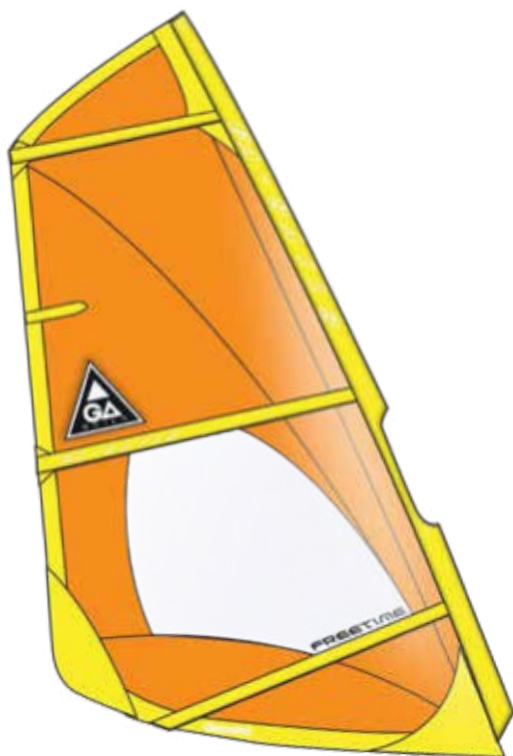
#### For Whom:

A perfect sail for schools and beginners making their first steps on a windsurfing board.

The Freetime's heavy-duty Dacron construction is pretty much bulletproof, so you don't have to worry about damages during the first challenging sessions. Either 1, 3 or 4 battens, depending on the sail size, give the Freetime perfect balance of stability, weight and performance to make learning a breeze. Being light, strong and functional, the Freetime will make you fall in love with Windsurfing from the first session on.









GA  
SAILS





THE ART TO BE AHEAD 71



THE ART  
TO BE  
AHEAD



# - MASTS -

## GA RIG SYSTEM

In 2017 our mast range underwent a Constant Curve evolution. Using our exclusive E.N.I.R. Technology we were also able to reduce weight, improve mast response and maintain the strength and durability needed for our world champion team to take on the toughest conditions in the world. In 2019 this evolution continues with even more performance improvements.

The new GA masts are tougher and long-lasting than ever before. The most significant changes will come in our RDM range. With a slick black carbon finish the 2019 masts are lighter and more responsive than previous years. Our construction layup has been refined to reduce weight and improve the overall flex characteristics of the masts across the complete range.

We believe, we have a mast to suit every level and budget in our 2019 range. Unrivalled performance combined with our incredible 2019 sail range means there is no better rig to choose.



# ENIR

EXCLUSIVE TO GA SAILS

Our GA racing team expects the best from our 100% SDM range. When every race counts, mast breakages or poor tuning will make the difference between a podium place or last place. Our 100% SDM delivers unrivaled acceleration and reflex timing that will keep you moving faster and faster! Top of the line carbon fiber is used and no expense is spared for the GA 100% Race. A proven title winner the GA SDM is the best in its class.

Size	IMCS	Weight	Carbon	Surface	Bag
400	19	1.68	100%	IPS	yes
430	21	1.75	100%	IPS*	yes
460	25	1.97	100%	IPS*	yes
490	29	2.10	100%	IPS*	yes
520	32	2.15	100%	IPS*	yes
550	36	2.80	100%	IPS*	yes

Size	IMCS	Weight	Carbon	Surface	Bag
340	14	1.30	100%	IPS*	yes
370	17	1.40	100%	IPS*	yes
400	19	1.60	100%	IPS*	yes
430	21	1.70	100%	IPS*	yes

The GA 100% RDM mast range is lighter and stronger than ever before. These masts must withstand the forces of mother nature and continue to do so as the GA Team pushes them to the limits! Built with the highest quality carbon fiber and cutting-edge technology the GA 100% RDM delivers ultimate performance time and time again.

Produced with the same technology as the GA 100, the 90 SDM has just about the same performance characteristics as our 100 SDM, but with more durability for when conditions get tough. The perfect choice for those wanting top performance in a long-lasting durable mast.

Size	IMCS	Weight	Carbon	Surface	Bag
430	21	2.00	90%	IPS*	yes
460	25	2.35	90%	IPS*	yes
490	29	2.30	90%	IPS*	yes

GA 100% SDM

GA 90% SDM

GA 100% RDM

The strength to weight ratio of the 90 RDM is unmatched and for 2019 the mast is as light as our previous 100% RDM. With performance as close as we could get to the 100 RDM the new mast is the perfect combination of durability and performance.

Size	IMCS	Weight	Carbon	Surface	Bag
370	17	1.70	90%	IPS*	yes
400	19	1.75	90%	IPS*	yes
430	21	2.00	90%	IPS*	yes

Size	IMCS	Weight	Carbon	Bag
370	17	1.56	70%	no
400	19	1.95	70%	no
430	21	2.25	70%	no

The 70 RDM mast offers unrivaled value for those looking for a product built with the latest pre-preg technologies. The 70% Carbon RDM mast is a great solution for those looking to use RDM masts in wave or freeride sails.

The 70 SDM mast offers unrivaled value for those looking for a product built with the latest pre-preg technologies. Ideal for free-time sailors looking for a mast that will outlast any other but with performance beyond expectation.

Size	IMCS	Weight	Carbon	Bag
430	21	2.15	70%	no
460	25	2.30	70%	no
490	28	2.70	70%	no

Size	IMCS	Weight	Carbon	Bag
430	21	2.40	50%	no
460	25	2.90	50%	no

The price point performer, the 50% carbon mast gets you out there! The diameter has been reduced making it possible to rig your sails with ease. Wall thicknesses have been increased for a stronger more dependable mast.

If you are looking for a dependable and strong RDM mast to get the full performance out of our wave and freestyle sails, the GA 50% RDM is the mast to choose. Great cost efficiency allows everybody to enjoy a good wave or freestyle session.

Size	IMCS	Weight	Carbon	Bag
370	17	1.60	50%	no
400	19	1.95	50%	no
430	21	2.40	50%	no

Get juniors the right stuff. The FOXX is developed to work harmoniously with the FOXX Sails- super light weight and durable for a long lasting rig setup!

Size	Weight	Carbon	Bag
300	1.55	30%	no
340	1.62	30%	no

\*IPS - The Invisible Polyamid Shield is a mast shielding device on all SDM masts.

An invisible barrier from a patented ,Prepreg Force Tank, takes durability and light weight to a new standard. The mast is sealed with a polyamid surface coating, making the mast 100% scratch and dent resistant. The strength of these new, 100, 90, 70% series, masts has been tested at 45% stronger than our previous models. After continuous abuse, the masts look new, stay strong and perform without compromise.



# - EXTENSIONS -

## G A R I G S Y S T E M

Constant development and hours of testing and tuning by our R&D team have lead to the GA Sails Team extension, the perfect choice for radical sailing and riders, who demand top performance of each part of their gear. We use the finest materials and optimized the wall thickness in order to provide the perfect strength to weight ratio and keep you and our team safe on the water. The moulded stainless steel fittings have been reduced to only the essentials and with our low friction pulleys and the no slip cleats rigging becomes easier than ever. The GA Team extension is the perfect choice for when performance matters, whether it's fighting for the podium or taking your freesurf to the next level.

TEAM SDM



0 - 48 cm

TEAM SDM



0 - 32 cm



Formuline





TEAM RDM

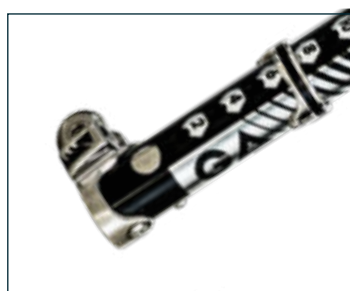
TEAM RDM



RDM 0 - 48 cm



RDM 0 - 32 cm



Formuline

# - EXTENSIONS -

G A R I G S Y S T E M

ALLOY RDM



0 - 30 cm

0 - 45 cm

ALLOY SDM



0 - 30 cm

0 - 45 cm

Make sure you won't waste power down hauling your sail and be able to rely on your gear with the GA Sails extension. Long-term development lead to a strong aluminium construction that guarantees high performance and no failures on and off the water. Down hauling your sail becomes easier than ever before thanks to the roller bearing parts, while the durable metal parts ensure a long-lasting product that keeps you safe on the water.

Tried and tested by our GA Team, this extension won't let you down!

## GA PRO BASE



The Pro Base is designed for ease and durability. Whether exhausted after a long day on the water or your fingers are simply frozen from the cold, the Pro Base is designed to give you maximum grip and good leverage to release the cleat. All this in a stylish low profile package.

Made from the highest quality materials the Pro Base has been tried and tested by the GA Team in the toughest conditions to make sure it won't let you down, when you need it most.

- Low profile - extremely durable
- Boundless pin for compatibility and consistency
- Shock absorbing grip padded plate
- Ergonomical shape for toolless attaching and detaching
- Comfortable outer shell minimizes toes and feet injury

## TIE DOWN STRAPS

3.05 m & 4.75 m long



Our heavy duty tie downs are made from high quality webbing and buckle components to prevent any unwanted slipping or wear. The buckles are covered in a padded soft protector to prevent any accidental damage to your car or gear while loading it on or off the roof.

## T - BOOM PROTECTOR

Extends down mast 20 cm



Our T-Boom protector is designed to offer padded protection down the length of the mast as well. Extending 20cm below the boom, the protection helps reduce dings and damage to your board during wipe outs. Made from top of the line rip-stop canvas and heavy duty Velcro with high impact foam padding to keep you and your gear in one piece

## BOOM PROTECTOR



The GA boom protector helps prevent damage to your board during a wipe out. Designed to fit snug around the head of your boom, it offers padding to save the nose of your board. Made from top of the line rip-stop canvas and heavy duty Velcro with high impact foam padding to keep your gear safe.

## ROOF RACKS PADS

50 cm leangth



Convenient roof rack pads help protect valuable cargo from un-wanted damage in transit.

## REGULAR UPHAUL

140 cm long





# - BOOMS -

G A R I G S Y S T E M

The GA boom range offers the right tool for every windsurfer out there! Not only pros will enjoy the high performance and stiffness of our GA Carbon range, but also kids, schools and every enthusiastic windsurfer can rely on the durability and quality of our Carbon and Aluminium ranges. Last year's addition of the GA Slim Carbon Pro came like a bombshell, reducing fatigue in especially wave and freestyle rider's hands significantly and rounding out our range perfectly. We mainly focused on the Carbon booms' designs this year, as the products themselves were working and performing impressively during the last year of testing.

The GA Aluminium range remains one of the best lines on the windsurfing market with the right product for every level of windsurfer and all sorts of conditions. Choose the Black Line for the best performance, you can get from an aluminium boom, or get your kids a lightweight Foxx Boom with extra thin diameter, so they can make the most out of their sessions. GA has the right boom for each one of you.



## SLIM CARBON PRO

Size	Grip Diameter	Weight	Tail Diameter	Construction
140 - 190 cm	24.5 mm	2.2 kg	20 mm	Carbon
150 - 210 cm	24.5 mm	2.3 kg	20 mm	Carbon

The Slim Carbon Pro boom has been developed to offer the ultimate blend of rigidity, strength, comfort and weight for all riders, looking for a high performance boom. Our refined GA Boom Head maximizes rigidity and prevents slippage, while the tweaked tail end ensures a longer boom life with great strength and durability. The ultra-comfortable EVA grip of GA's highest quality standard rounds out the GA Slim Carbon Pro Boom that will impress and inspire session after session.

Our Slim Carbon Pro comes in the two sizes most requested by our top riders and with the most gains in performance thanks to the slim design: 140-190cm and 150-210cm.

# - BOOMS -

G A R I G S Y S T E M



## WAVE CARBON

Size	Grip Diameter	Weight	Material
140 - 190 cm	29.3 mm	2.33 kg	Carbon
150 - 210 cm	29.3 mm	2.44 kg	Carbon

The GA Wave boom's slightly reduced diameter and partially V-shaped grip section offer phenomenal ergonomics for less fatigue and sessions lasting for hours. The oversized front section adds maximum stiffness to the Wave boom, which grants most direct feeling for the sail and impressive control. A strong monocoque molded tail features our intelligent plastic add-on component with a rapid outhaul fix system and a double protection pad to prevent the carbon from being damaged, when hitting rocks or hard surface.

The 2019 GA Wave is available in two sizes, 140-190cm and 150-210cm, so you always have the right boom for your sail range.





## SLALOM CARBON

Size	Grip Diameter	Weight	Material
180 - 230 cm	32.2 mm	2.92 kg	Carbon
200 - 260 cm	32.2 mm	3.24 kg	Carbon
220 - 280 cm	32.2 mm	3.64 kg	Carbon

With the GA Race boom you'll be able to stay in full control of your racing engine without losing your power on long racing days. Its uncompromising construction makes the GA race extremely stiff and light, resulting in a direct feeling for the sail and control at all times. In order to reduce the swing weight, which is one of the most important factors for jibing around the racecourse, we developed a monocoque molded tail with integrated pulleys, which also reduces the overall weight to a minimum and creates an ultra-stiff construction. The over-sized front and back sections further improve the overall stiffness for maximum performance at all stages.

The stiffest and lightest racing boom on the market, the GA Race, is available in three sizes to fit all racing sails in your quiver: 180-230cm, 200-260cm and 220-280cm.



## BLACK LINE

Our Flagship Alloy Boom.

Size	Grip Diameter	Weight	Material
140 - 190 cm	26 / 29 mm	2.51 kg	Alloy T8
150 - 200 cm	26 / 29 mm	2.60 kg	Alloy T8
160 - 210 cm	26 / 29 mm	2.67 kg	Alloy T8
180 - 230 cm	26 / 29 mm	2.91 kg	Alloy T8

A uniquely tapered construction provides extra stiffness in the back section of the Black Line boom, making it averagely 20% stiffer than the Green Line, according to tests in the laboratory. The GA boom head provides a tight connection to the mast, so you won't have to worry about a sliding boom even in the roughest conditions. A double push-pin operating system guarantees strength and durability at all times, while the GA boom grip offers phenomenal feeling for your rig. Each length of the Black Line is bend differently, in order to get the best performance out of every size, making this boom the best compromise between strength, durability and price.



## GREEN LINE

Size	Grip Diameter	Weight	Material
140 - 190 cm	29 mm	2.51 kg	Alloy T8
160 - 210 cm	29 mm	2.69 kg	Alloy T8
180 - 230 cm	29 mm	2.95 kg	Alloy T8
200 - 250 cm	29 mm	3.08 kg	Alloy T8

All sizes of the GA Green Line are shaped in a different manner to get the best performance for your sail in each length. The longer the boom gets, the wider the bend is, giving your rig the perfect balance and enough space to make a deep, powerful profile work smoothly. With a double push-pin operating system strength and durability are guaranteed even in the roughest conditions. The finishing touch is given by the GA boom grip that adds ultimate and direct feeling for your rig.



## FOXX BOOM

Size	Grip Diameter	Weight	Material
120 - 170 cm	25 mm	1.78 kg	Alloy T6

This boom is specifically designed for the little ones with a thin grip diameter and a lightweight aluminium construction. The Foxx Boom can be adjusted from 120cm to 170cm and perfectly fits our Foxx sails, offering the perfect platform for kids to improve and especially enjoy their time on the water. Tested and approved by kids!



## FIXED

Standard loop harness lines feed on from the end of your boom section. Fixed lines offer great strength and durability.

*18", 20", 22", 24", 26", 28", 30", 32", 34", 36"*



## FIXED ADJUSTABLE

Standard adjustable lines durable plastic adjustment cleat light high quality webbing. Easy to use pulley handle for fast adjustment on the go.

*18-24", 22-28", 26-32", 30-36"*



## QUICK FIXED

Quick fix system allows the user to quickly swap out their harness lines without taking apart their boom. Great for everyday sailors looking to avoid the hassles of derigging your kit every time you break a line.

*18", 20", 22", 24", 26", 28", 30", 32", 34", 36"*



## QUICK ADJUSTABLE

Designed for speed and simplicity our QUICK ADJUSTABLE lines can be attached to the boom without removing the back end, ensuring you never miss the starting line, while changing a broken harness line. With a high quality plastic buckle and a durable no stretch rope the QUICK ADJUSTABLE lines are the perfect racing solution.

*18-24", 22-28", 26-32", 30"-36"*



## RACE ADJUSTABLE

Our premiere racing lines the RACE ADJUSTABLE lines are made from only the best materials and to the best quality. The highest quality stainless steel buckles ensure your lengths never change unless you choose to. Ergonomic pull handles allow premium-fast adjustment while out on the water and the low stretch rope with high visibility white tube ensures you never miss your lines in that critical second.

*18-24", 22-28", 26-32", 30"-36"*



# - HARNESSSES -

WATCH YOUR BACK

## G5 PRO



The G5 PRO is designed for those of you who need the ultimate back support and comfort. With the ultimate back support in our range, the G5 PRO will cushion and support your back from top to bottom. G5 ergonomics have improved even further and a carefully designed high support 3D moulded design ensures support for your back. A refined kidney belt locks the harness in place and our Dual Strap adjustment system provides a final layer of support, you can't beat. The perfect choice for anyone looking for no compromise comfort in a waist harness.

## UNIT



Designed to allow maximum freedom and support in a compact design. The comfort core remains with memory foam outer linings and harness frame adding greater comfort and support, no matter how long your session or big the wipe out. Spine and Lumbar support have been tweaked to increase protection and a low profile helps the harness wrap snugly into almost any body shape. A single strap buckle system improves freedom of movement and makes adjustment and tuning a breeze. The perfect choice for maximum comfort without restricting mobility.

### General Harness Comparison:

**G5 PRO** – Ultra High Support, unparalleled comfort, maximum body connection and careful ergonomic structure.

**UNIT** – Great support, maximum manoeuvrability and freedom, lightweight.

**GRID** – Lightweight, maximum manoeuvrability, easy access.

**Rider** – Comfort Seat, superior support, maximum drive.

**Race** – Maneuverable Seat, direct feeling, lightweight, racing performance.

**GRID**

The GRID is your best everyday solution. Designed to be lightweight and flexible, it offers the rider the perfect compromise of freedom, strength and support. Refined ergonomics to improve support and a memory foam frame enhance comfort and keep the harness snug against your body, no matter what you're trying. The GRID is our lowest profile and freest feeling harness.

**RIDER**

The RIDER is our all-purpose seat harness designed for freeride and freerace enthusiasts. Refined for 2019 our RIDER offers excellent comfort and support. Our 8-way strapping system makes sure that all loads are distributed evenly around the harness for maximum comfort during long days on the water. A medium hook height makes hooking in and out easy while still providing the leverage, you need for performance sailing. A great harness for those looking to move to a seat harness without losing the comfort advantage of a waist harness.

**RACE**

A low bar height and the cross-strap system make this harness a performance weapon. With a low center of gravity and locked in feel, the 2019 RACE harness will give you that extra leverage, you need to get ahead of your friends. Our lightweight materials and careful ergonomic strapping system will keep you comfortable and supported during a long day racing.

**WAIST SIZE IN CM**

ITEM	XS	S	M	L	XL
G5 PRO	-	72	77	82	87
UNIT	-	71	76	81	86
GRID	-	71	76	81	86
RIDER	70	75	80	85	90
RACE	70	75	80	85	90



GA

SAILS





# MANIC HD



C.3

SIZE	MAST	IMCS	LUFF	BOOM	BASE	BATTEN	TOP	IDEAL MAST
3.3	370	17	341	140	0-2	4	Vario	Gaastra 100/90/70 RDM
3.7	370	17	356	147	0-2	4	Vario	Gaastra 100/90/70 RDM
4.0	370	17	370	150	2	4	Vario	Gaastra 100/90/70 RDM
4.2	370	17	375	155	6	4	Fixed	Gaastra 100/90/70 RDM
4.5	370	17	385	160	16	4	Fixed	Gaastra 100/90/70 RDM
4.7	370	17	393	164	24	4	Fixed	Gaastra 100/90/70 RDM
5.0	400	19	413	171	14	5	Fixed	Gaastra 100/90/70 RDM
5.4	400	19	421	173	22	5	Fixed	Gaastra 100/90/70 RDM
5.8	430/400	21/19	437	179	8	5	Fixed	Gaastra 100/90/70 RDM
6.2	430	21	444	188	14	5	Fixed	Gaastra 100/90/70 RDM

Compatible with other masts that are equal in length and IMCS.  
Current technical specifications! All rights reserved to improve / modify / change any product at anytime.

# MANIC



C.1



C.2

SIZE	MAST	IMCS	LUFF	BOOM	BASE	BATTEN	TOP	IDEAL MAST
3.3	370	17	341	140	0-2	4	Vario	Gaastra 100/90/70 RDM
3.7	370	17	356	147	0-2	4	Vario	Gaastra 100/90/70 RDM
4.0	370	17	370	150	2	4	Vario	Gaastra 100/90/70 RDM
4.2	370	17	375	155	6	4	Fixed	Gaastra 100/90/70 RDM
4.5	370	17	385	160	16	4	Fixed	Gaastra 100/90/70 RDM
4.7	370	17	393	164	24	4	Fixed	Gaastra 100/90/70 RDM
5.0	400	19	413	171	14	5	Fixed	Gaastra 100/90/70 RDM
5.4	400	19	421	173	22	5	Fixed	Gaastra 100/90/70 RDM
5.8	430/400	21/19	437	179	8	5	Fixed	Gaastra 100/90/70 RDM
6.2	430	21	444	188	14	5	Fixed	Gaastra 100/90/70 RDM

Compatible with other masts that are equal in length and IMCS.  
Current technical specifications! All rights reserved to improve / modify / change any product at anytime.

# IQ



C.1



C.2

SIZE	MAST	IMCS	LUFF	BOOM	BASE	BATTEN	TOP	IDEAL MAST
3.3	370	17	342	140	0-2	4	Vario	Gaastra 100/90/70 RDM
3.6	370	17	356	142	0-2	4	Vario	Gaastra 100/90/70 RDM
4.0	370	17	371	150	2	4	Vario	Gaastra 100/90/70 RDM
4.2	370	17	376	153	6	4	Fixed	Gaastra 100/90/70 RDM
4.5	370	17	387	159	18	4	Fixed	Gaastra 100/90/70 RDM
4.7	370	17	394	163	24	4	Fixed	Gaastra 100/90/70 RDM
5.0	400/370	19/17	405	166	6	4	Fixed	Gaastra 100/90/70 RDM
5.4	400	19	417	171	18	4	Fixed	Gaastra 100/90/70 RDM
5.9	430/400	21-19	431	179	2	4	Fixed	Gaastra 100/90/70 RDM

Compatible with other masts that are equal in length and IMCS.  
Current technical specifications! All rights reserved to improve / modify / change any product at anytime.

## PURE



C.2

SIZE	MAST	IMCS	LUFF	BOOM	BASE	BATTEN	TOP	IDEAL MAST
4.0	370	17	380	148	10	4	Fixed	Gaastra 100/90/70 RDM
4.4	370	17	393	152	24	4	Fixed	Gaastra 100/90/70 RDM
4.8	400	19	412	158	12	4	Fixed	Gaastra 100/90/70 RDM
5.2	400	19	425	168	24	4	Fixed	Gaastra 100/90/70 RDM

Compatible with other masts that are equal in length and IMCS.

Current technical specifications! All rights reserved to improve / modify / change any product at anytime.

## HYBRID



C.1



C.3

SIZE	MAST	IMCS	LUFF	BOOM	BASE	BATTEN	TOP	XPLY Window	IDEAL MAST
3.7	370	17	365	145	0	4	Vario	yes	Gaastra 90/70/50 RDM
4.2	370/400	17/19	386	155	16	4	Vario	yes	Gaastra 90/70/50 RDM
4.7	400/370	19/17	402	165	2	4	Vario	yes	Gaastra 90/70/50 RDM
5.2	400	19	417	174	18	5	Fixed	yes	Gaastra 90/70/50 RDM
5.6	430	21	433	178	4	5	Fixed	yes	Gaastra 90/70/50 RDM
6.0	430	21	445	187	16	5	Fixed	yes	Gaastra 90/70/50 RDM/SDM
6.4	430	21	455	193	26	5	Fixed	yes	Gaastra 90/70/50 RDM/SDM
6.7	430	21	450	191	22	6	Fixed	no	Gaastra 90/70/50 RDM/SDM
7.2	460/430	25/21	466	199	6	6	Fixed	no	Gaastra 90/70/50 SDM
7.7	460	25	477	208	18	6	Fixed	no	Gaastra 90/70/50 SDM
8.2	460/490	25-29	493	213	34	6	Fixed	no	Gaastra 90/70/50 SDM

Compatible with other masts that are equal in length and IMCS.

Current technical specifications! All rights reserved to improve / modify / change any product at anytime.

## MATRIX



C.1



C.3

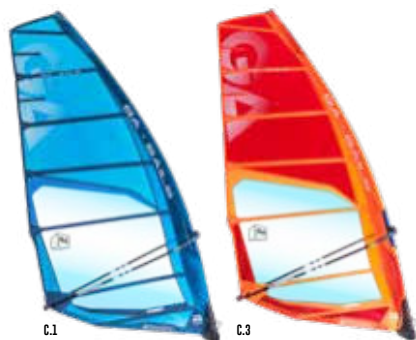
SIZE	MAST	IMCS	LUFF	BOOM	BASE	BATTEN	TOP	CAMS	IDEAL MAST
5.7	400/430	19/21	422	183	22	6	Vario	0	Gaastra 90/70/50 RDM-SDM
6.2	430	21	436	194	6	6	Fixed	0	Gaastra 90/70/50 RDM-SDM
6.7	430	21	448	205	18	7	Fixed	0	Gaastra 90/70/50 RDM-SDM
7.2	460/430	25/21	467	210	8	7	Fixed	0	Gaastra 90/70/50 SDM
7.7	460	25	479	221	20	7	Fixed	0	Gaastra 90/70/50 SDM
8.4	490/460	29/21	495	229	6	7	Fixed	0	Gaastra 90/70/50 SDM

Compatible with other masts that are equal in length and IMCS.

Current technical specifications! All rights reserved to improve / modify / change any product at anytime.



## COSMIC



SIZE	MAST	IMCS	LUFF	BOOM	BASE	BATTEN	TOP	CAMS	IDEAL MAST
6.2	430	21	437	193	8	7	Fixed	2	Gaastra 90/70 SDM
6.7	430	21	451	202	22	7	Fixed	2	Gaastra 90/70 SDM
7.2	460/430	25/21	468	209	8	7	Fixed	2	Gaastra 90/70 SDM
7.7	460	25	480	218	20	7	Fixed	2	Gaastra 90/70 SDM
8.3	490/460	29/25	496	227	6	7	Fixed	2	Gaastra 90/70 SDM
9.0	490	29	508	240	18	7	Fixed	2	Gaastra 90/70 SDM

Compatible with other masts that are equal in length and IMCS.

Current technical specifications! All rights reserved to improve / modify / change any product at anytime.

## PHANTOM



SIZE	MAST	IMCS	LUFF	BOOM	BASE	BATTEN	TOP	CAMS	IDEAL MAST
5.7	400/430	19/21	420	187	22	7	Vario	2+1	Gaastra 100/90 SDM
6.4	430/400	21/19	440	202	12	7	Fixed	2+1	Gaastra 100/90 SDM
7.1	430	21	463	208	34	7	Fixed	2+1	Gaastra 100/90 SDM
7.8	460/430	25/21	488	218	30	7	Fixed	2+1	Gaastra 100/90 SDM
8.5	490	29	511	228	22	7	Fixed	2+1	Gaastra 100/90 SDM
9.2	490	29	524	239	36	7	Fixed	2+1	Gaastra 100/90 SDM

Compatible with other masts that are equal in length and IMCS.

Current technical specifications! All rights reserved to improve / modify / change any product at anytime.

## VAPOR



SIZE	MAST	IMCS	LUFF	BOOM	BASE	BATTEN	TOP	CAMS	IDEAL MAST
5.2	400	19	TBA	TBA	TBA	8	Fixed	4	Gaastra 100 SDM
5.6	400	19/21	TBA	TBA	TBA	8	Fixed	4	Gaastra 100 SDM
6.4	400/430	19/21	TBA	TBA	TBA	8	Fixed	4	Gaastra 100 SDM
7.1	430	21	TBA	TBA	TBA	8	Fixed	4	Gaastra 100 SDM
7.9	460	25	TBA	TBA	TBA	8	Fixed	4	Gaastra 100 SDM
8.6	490	29	TBA	TBA	TBA	8	Fixed	4	Gaastra 100 SDM
9.4	520	32	TBA	TBA	TBA	8	Fixed	4	Gaastra 100 SDM
TBA	TBA	TBA	TBA	TBA	TBA	TBA	TBA	TBA	Gaastra 100 SDM
TBA	TBA	TBA	TBA	TBA	TBA	TBA	TBA	TBA	Gaastra 100 SDM
TBA	TBA	TBA	TBA	TBA	TBA	TBA	TBA	TBA	Gaastra 100 SDM

Compatible with other masts that are equal in length and IMCS.

Current technical specifications! All rights reserved to improve / modify / change any product at anytime.

## PILOT

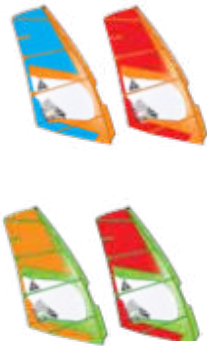


SIZE	MAST	IMCS	LUFF	BOOM	BASE	BATTEN	TOP	IDEAL MAST
4.5	400	19	407	153	7.5	4	Vario	Gaastra 90/70/50 SDM
5.0	400	19	422	166	22.5	4	Vario	Gaastra 90/70/50 SDM
5.6	430	21	435	180	7.5	5	Fixed	Gaastra 90/70/50 SDM
6.2	430	21	453	189	25	5	Fixed	Gaastra 90/70/50 SDM
6.8	460	25	468	199	10	5	Fixed	Gaastra 90/70/50 SDM

Compatible with other masts that are equal in length and IMCS.

Current technical specifications! All rights reserved to improve / modify / change any product at anytime.

## FOXX

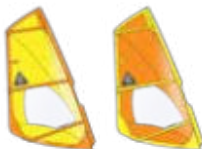


SIZE	MAST	IMCS	LUFF	BOOM	BASE	BATTEN	TOP	CAMS	IDEAL MAST
2.2	300	TBA	275	116	0	3	Vario	0	Gaastra FOXX
2.5	300	TBA	287	120	0	3	Vario	0	Gaastra FOXX
3.0	300	TBA	323	138	25	3	Vario	0	Gaastra FOXX
3.5	300	TBA	323	147	25	3	Vario	0	Gaastra FOXX
4.0	300	TBA	335	162	35	3	Vario	0	Gaastra FOXX

Compatible with other masts that are equal in length and IMCS.

Current technical specifications! All rights reserved to improve / modify / change any product at anytime.

## FREETIME



SIZE	MAST	IMCS	LUFF	BOOM	BASE	BATTEN	TOP	CAMS	IDEAL MAST
1.0	300	TBA	166	122	TBA	1	Vario	0	Gaastra FOXX
1.5	300	TBA	200	120	TBA	1	Vario	0	Gaastra FOXX
2.0	300	TBA	223	121	TBA	1	Vario	0	Gaastra FOXX
2.5	300	TBA	246	137	TBA	1	Vario	0	Gaastra FOXX
3.0	300	TBA	287	154	TBA	2	Vario	0	Gaastra FOXX
3.5	400	TBA	312	157	TBA	3	Vario	0	Gaastra 50 SDM
4.0	400	TBA	338	160	TBA	3	Vario	0	Gaastra 50 SDM
4.5	400	TBA	373	169	TBA	3	Vario	0	Gaastra 50 SDM
5.0	430	TBA	404	176	TBA	4	Vario	0	Gaastra 50 SDM
5.5	430	TBA	420	185	TBA	4	Vario	0	Gaastra 50 SDM
6.0	430	TBA	440	193	TBA	4	Vario	0	Gaastra 50 SDM
6.5	460	TBA	464	200	TBA	4	Vario	0	Gaastra 50 SDM

Compatible with other masts that are equal in length and IMCS.

Current technical specifications! All rights reserved to improve / modify / change any product at anytime.

FOR XPLY AND DACRON VERSION

# GA SAILS

THE ART  
TO BE  
AHEAD

GAastra.COM

New Sports GmbH  
Gaastra, Tabou & Vandal  
Alfred-Nobel-Str. 2-14  
50226 Frechen / Germany

email: [info@gaastra.com](mailto:info@gaastra.com)  
tel: +49 (0) 2234 933400  
tel: +49 (0) 431 3890790  
fax: +49 (0) 2234 9334016  
fax: +49 (0) 431 38907920

Photography: John Carter, Lorenzo Mittiga, Lorenzo Munzlinger, product pics Axel Weckermann  
Design: Axel Weckermann  
Text: Konstantin Weier  
Special thanks to: Ross Williams, Jamie Hancock, Thomas Traversa, Matt Pritchard, Aleix Sanllehy Gonzalez, Graham Ezzy,  
Antony Ruenes and Cedric Bordes  
Gaastra reserves the right to improve / modify / change any product at anytime!